

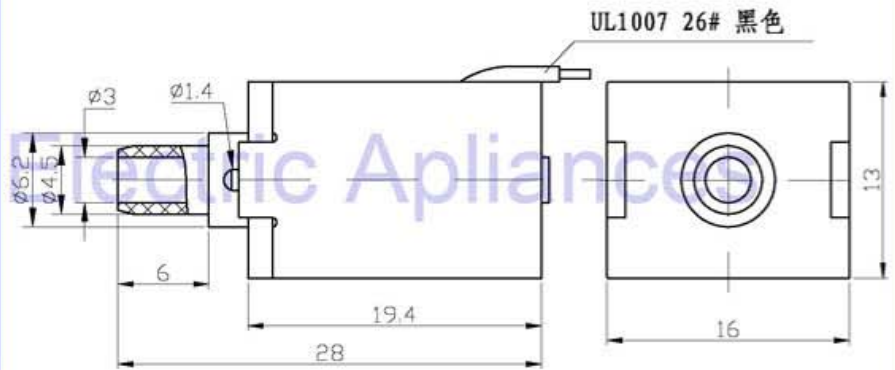
ZHV-0520S Solenoid Valve

ISO/TS16949 ISO9000 ISO14000
RoHS REACH CE UL VDE TÜV



总重量 Total Weight: 18g
应用范围: 食品真空包装机
APPLICATION: FOOD VACUUM PACKING MACHINE

类型: 二位三通 TYPE: Two position two way

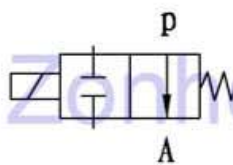


单位:mm Units:mm

综合特性 GENERAL FEATURES

1. 常用压力: 0~375mmHg/0~0.5Bar
Pressure: 0~375mmHg/0~0.5Bar
2. 最小通径: $\phi 1.8\text{mm}$
Min Orifice: $\phi 1.8\text{mm}$
3. 流体介质: 空气
Fluid medium: Air
4. 寿命: 典型值为100万次 (on 1s, off 1s)
Lify cycle: 1,000,000 cycles (on 1s, off 1s)
5. 绝缘等级: B类
Insulation class: class B

常开型/NO



COIL DATA线圈资料

$$\text{工作周期}(\%) = \frac{\text{工作时间}}{\text{工作时间} + \text{断开时间}} \times 100\%$$

$$\text{Duty cycle}(\%) = \frac{\text{"ON" time}}{\text{"ON" time} + \text{"OFF" time}} \times 100\%$$

最大工作时间(秒) MAX. "on" time in seconds

瓦特(W) (20°C) Watts at 20°C

安匝数AT(20°C) Ampere-turns at 20°C

连续 Continuous 100%	间断 Or less 50%	间断 Or less 25%	间断 Or less 10%
∞	55	19	3
1.6	3.2	5.4	16
300	424	600	948

型号 Type no.	阻值(20°C) Resistance (Ω) $\pm 10\%$	线圈匝数 No. Turns	电压(VDC) Voltage DC			
ZHV-0520L-XX A XX	23	1150	6	8.5	12	19
No symbol	90	2290	12	17	24	38
三通 Three Way	380	4500	24	34	48	76
常闭 NC	1440	8600	48	68	96	152
常开 NO						

电磁阀 ZHV